



PER ANNUM

£6,500 Per Annum

Bethnal Green Road

London, E2 6AH

Full Description

The units are carpeted throughout and have double glazed windows. There is a shared W/C and Kitchen area within the building. Includes, electric and water rates. Business rates are paid by tenant (if applicable)

Location

Set on the busy stretch of Bethnal Green Road with easy access to Shoreditch High Street, Bethnal Green and Liverpool Street Stations. Brick Lane is located close by as well as an array of shops located on the main road.

Services

All services are included (not internet or phonelines or business rates)

Terms

minimum 1 year

Viewing

Strictly by appointment only,

Rates

Business rates are payable by tenant.

VAT

The property is not liable for VAT

Legal Costs

Each party to cover their own legal costs.

Service Charge

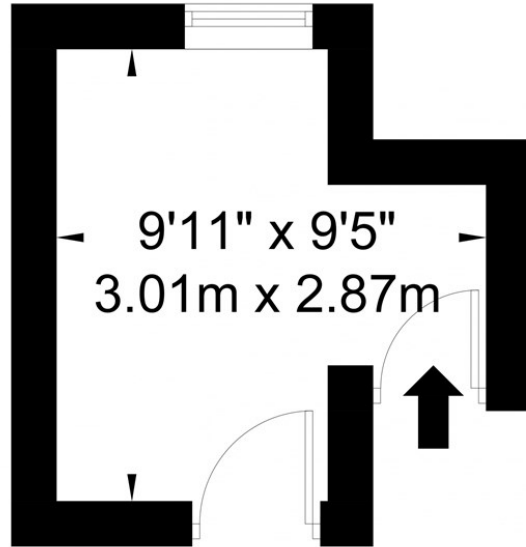
Service charge is payable





Bethnal Green Road, Shoreditch, E2 6AH

Approx. Gross Internal Area = 12.9 sq m / 138 sq ft



First Floor

Ref

Copyright **BLEU PLAN**

Disclaimer : Floor plan measurements are approximate and are for illustrative purposes only. While we do not doubt the floor plan accuracy and completeness, you or your advisors should conduct a careful, independent investigation of the property in respect of monetary valuation

Energy Efficiency Rating		Current	Potential
<i>Very energy efficient - lower running costs</i>			
(92 plus) A			
(81-91) B			
(69-80) C			
(55-68) D			
(39-54) E			
(21-38) F			
(1-20) G			
<i>Not energy efficient - higher running costs</i>			
England & Wales	EU Directive 2002/91/EC		

Agents Note: Whilst every care has been taken to prepare these particulars, they are for guidance purposes only. All measurements are approximate and are for general guidance purposes only and whilst every care has been taken to ensure their accuracy, they should not be relied upon and potential buyers/tenants are advised to recheck the measurements

OFFICE ADDRESS
88 Cheshire Street
London
E2 6EH

OFFICE DETAILS
0207 739 6969
info@peachproperties.com
www.peachproperties.com